

Health Vulnerability of Cardiovascular Disease In Semarang City

Presented in The 4th *International Conference On Health Practice And Research (ICHPR): Prevention, Detection And Treatment of Cardiovascular Disorders*

By. Dr. dr. Mochamad Abdul Hakam, Sp.PD, FINASIM
Semarang, March 15th 2023

1

MORBIDITY OF CARDIOVASCULAR CASE

2

**HEALTH TRANSFORMATION IN SEMARANG
CITY RELATED TO CARDIOVASCULAR CASE
SERVICES**

OUTLINES

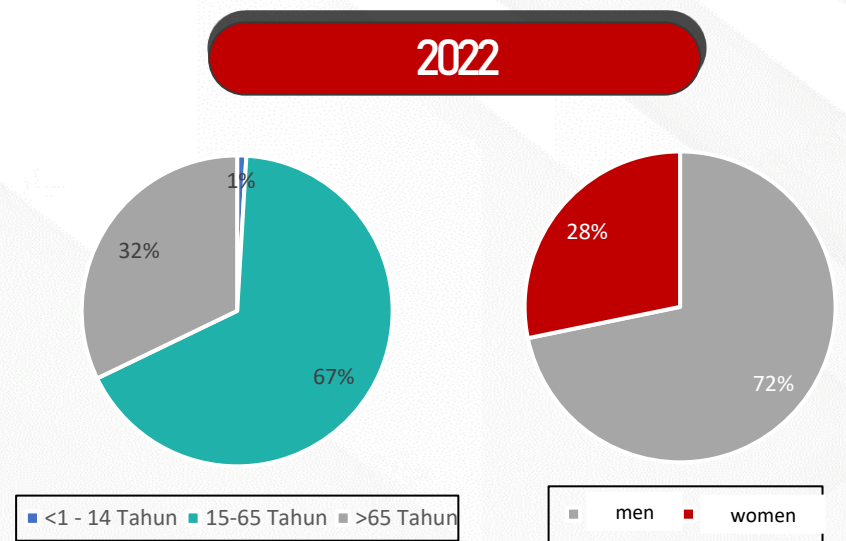
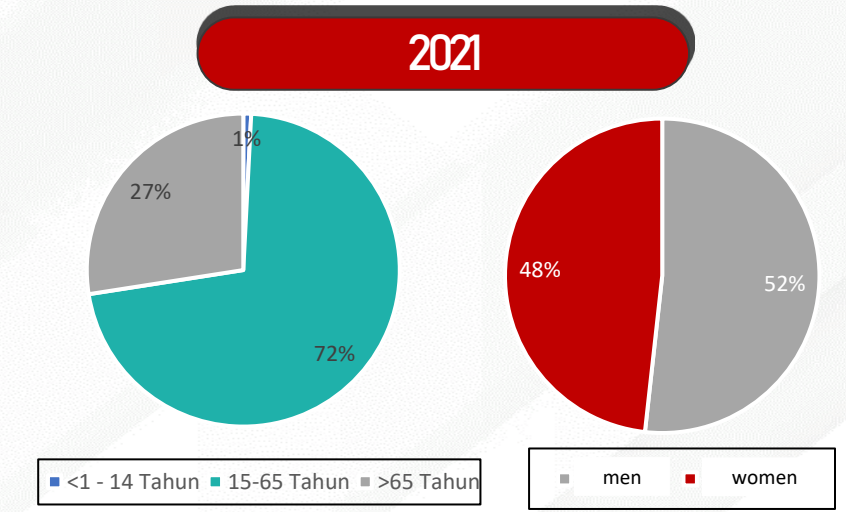
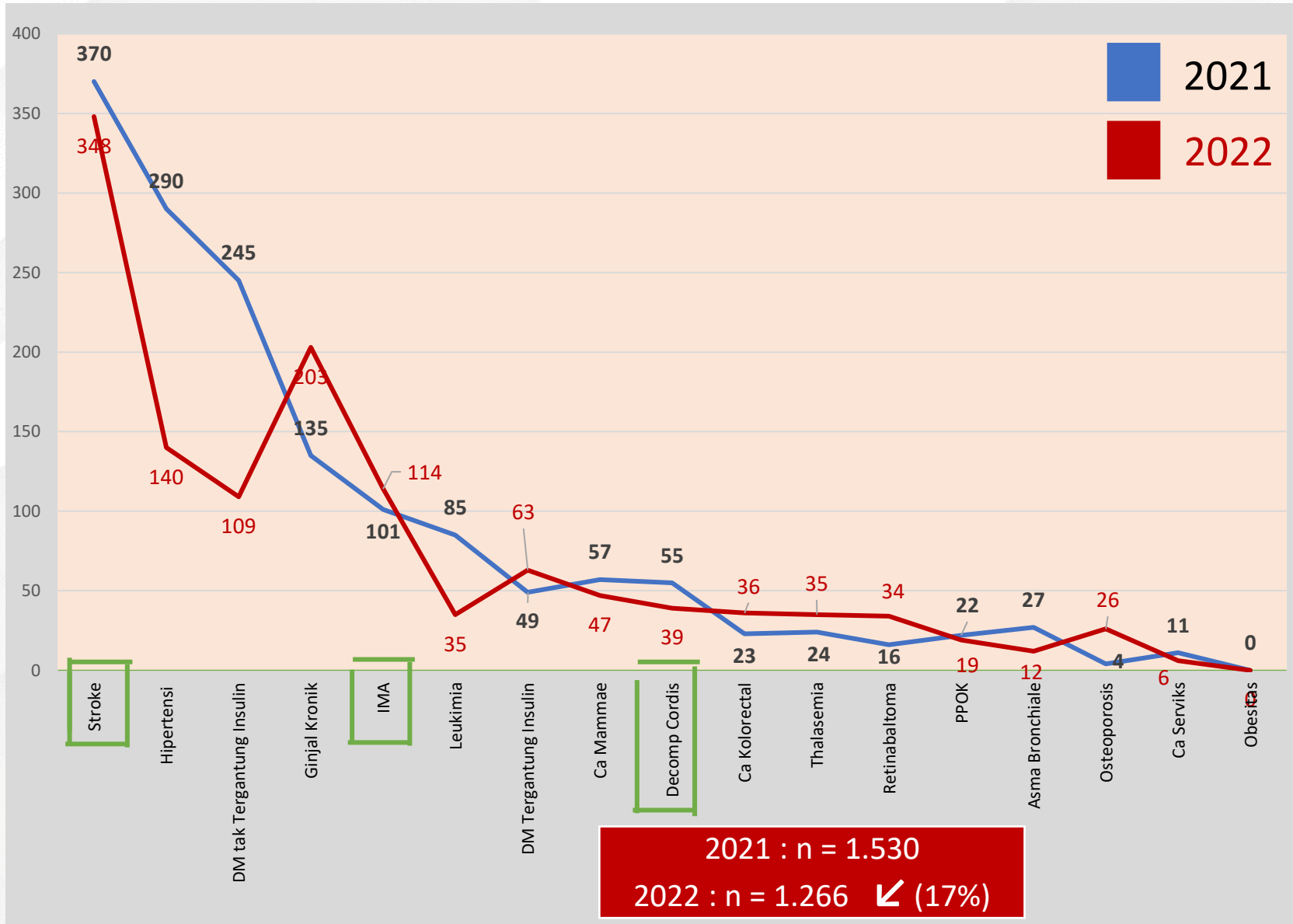


“Cardiovascular diseases (CVDs) are **the leading cause of death globally**, taking an estimated 17.9 million lives each year”

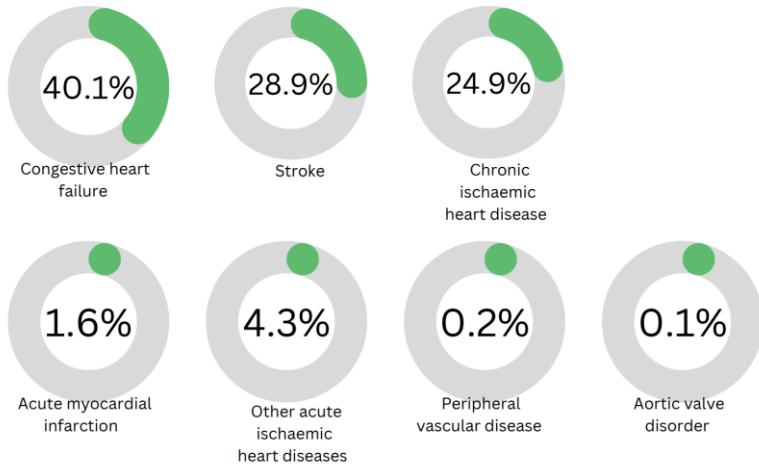
CVDs are a group of disorders of the heart and blood vessels and include coronary heart disease, cerebrovascular disease, rheumatic heart disease and other conditions.

More than four out of five CVD deaths are due to **heart attacks and strokes**, and one third of these deaths occur prematurely in people under 70 years of age.

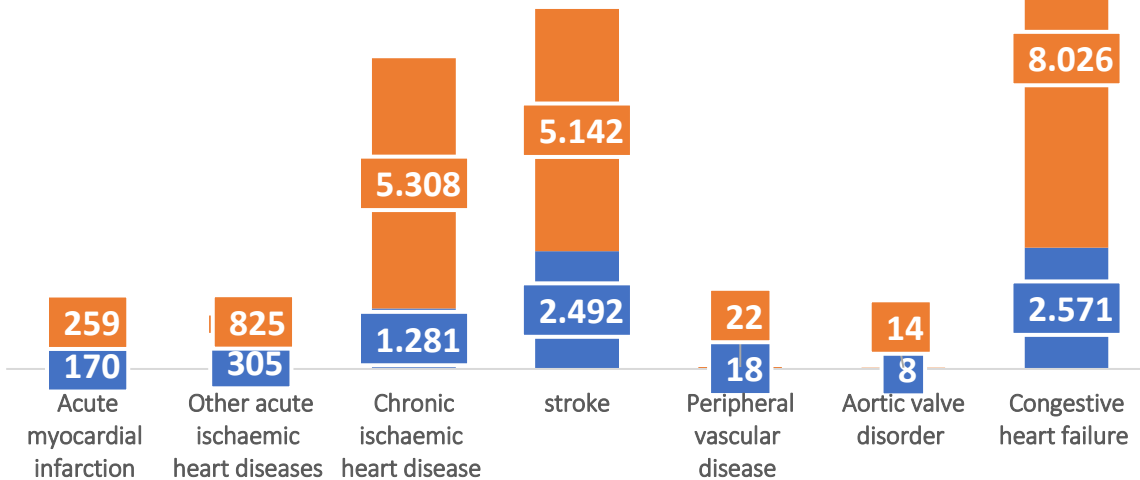
Mortality due to Non-Communicable Diseases (NCDs) in Semarang City 2021-2022



CARDIOVASCULAR DISEASES IN SEMAMARANG CITY 2022



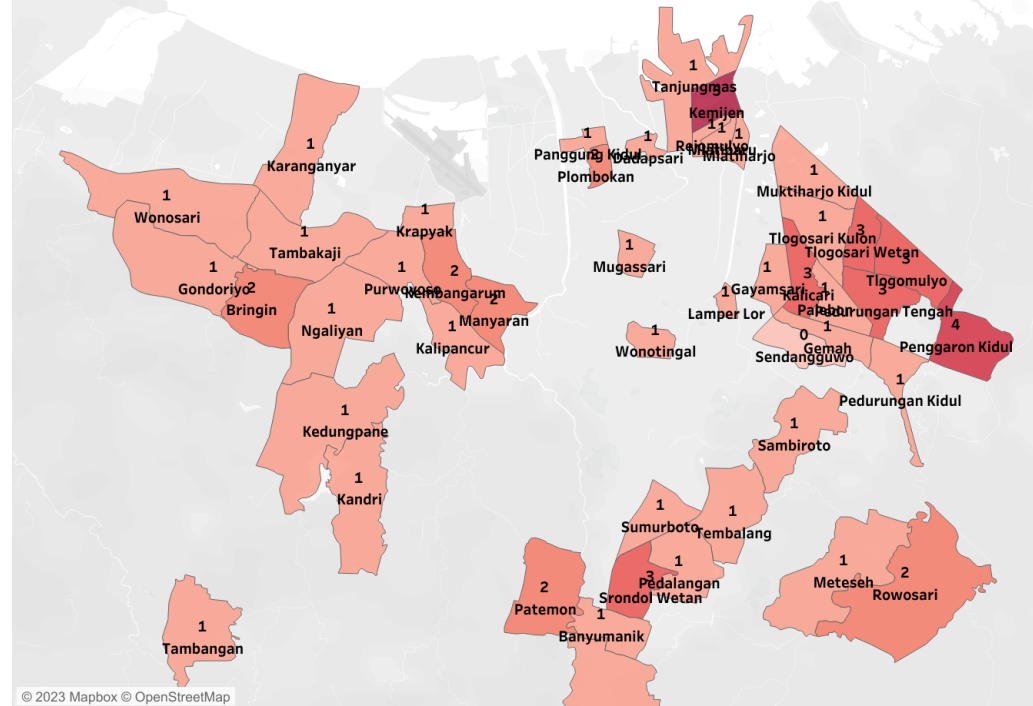
Total Cases of Cardiovascular : 26.441



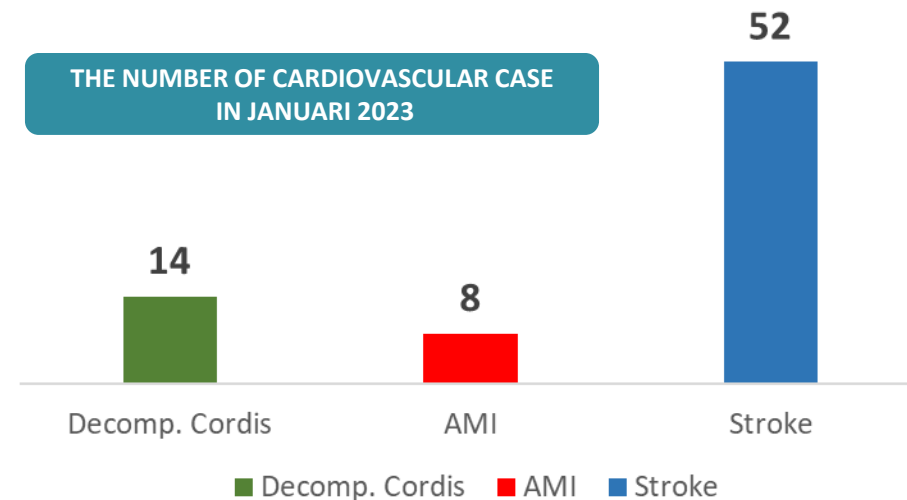
■ new case ■ old case

Source: SIMPUS

THE DISTRIBUTION OF CASES OF DECOM. CORDIS, AMI, & STROKE IN JANUARI 2023



THE NUMBER OF CARDIOVASCULAR CASE IN JANUARI 2023

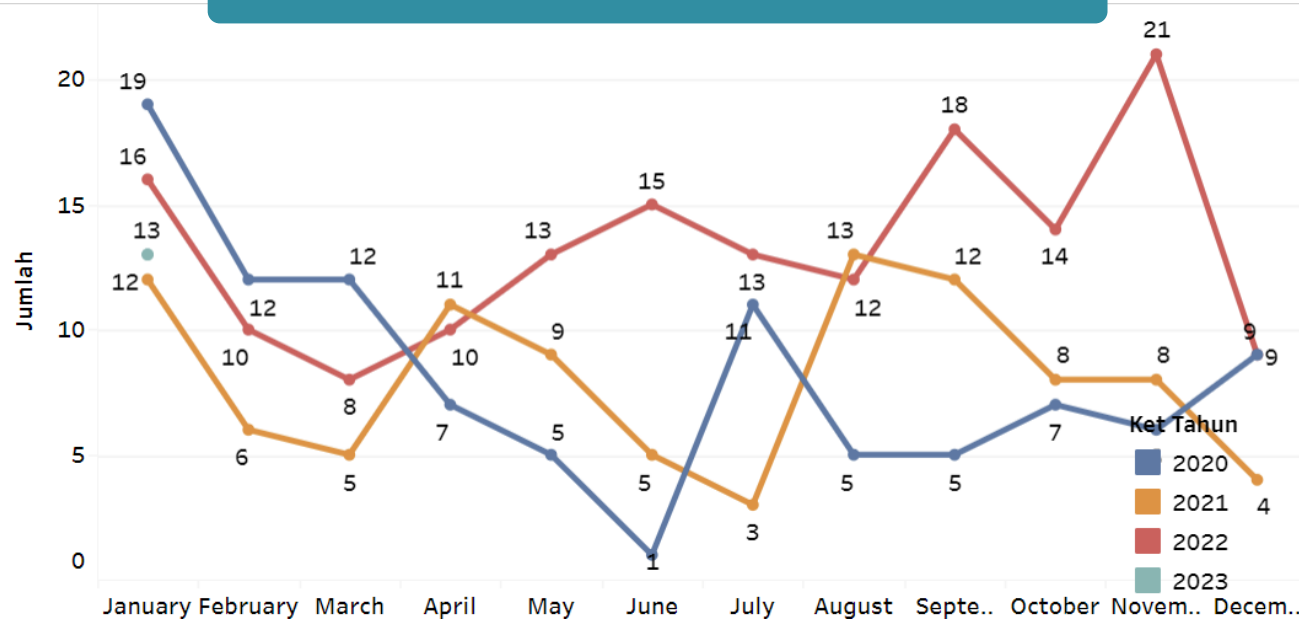


■ Decomp. Cordis ■ AMI ■ Stroke

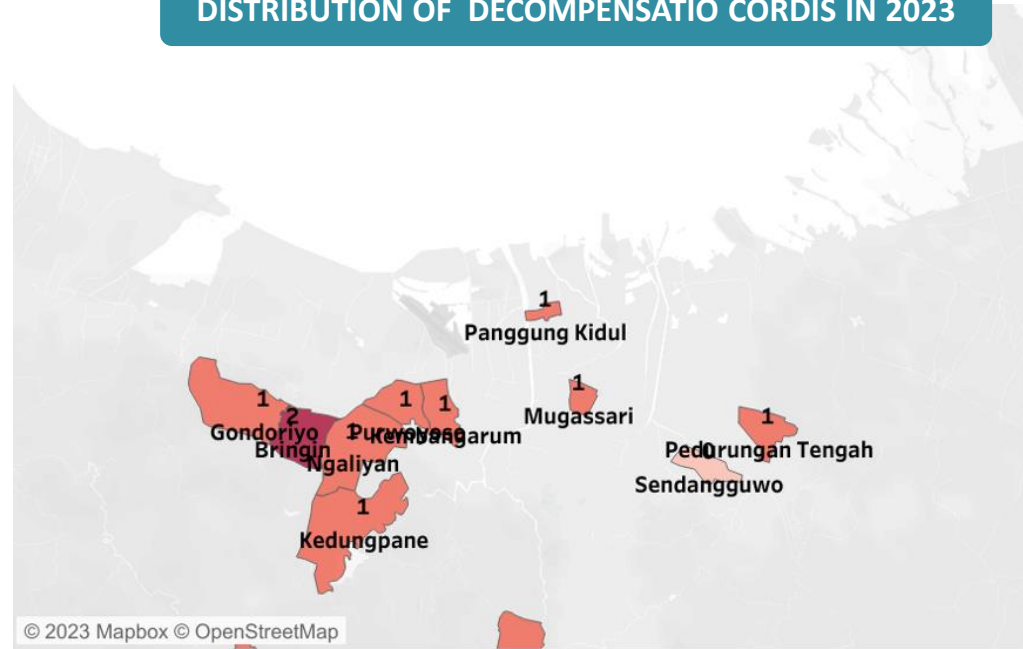


Decompensatio Cordis

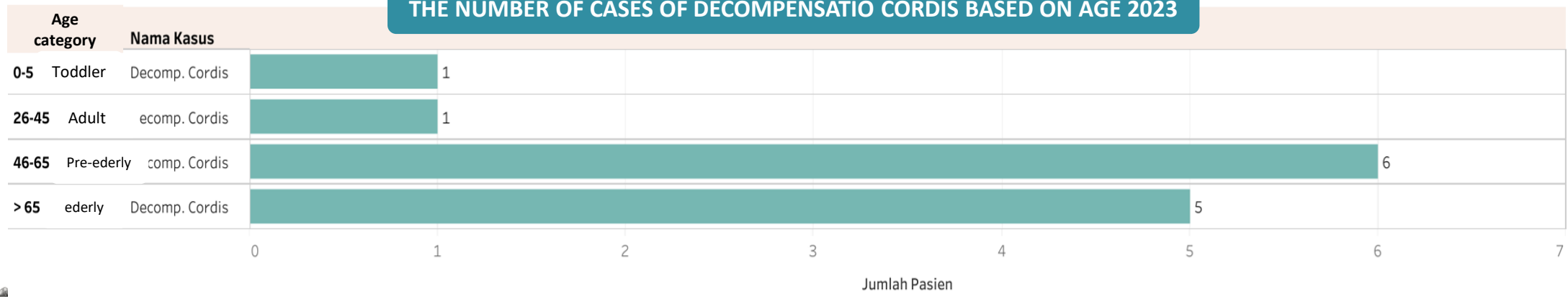
TREND OF DECOMPENSATIO CORDIS CASES FROM 2020 TO 2023



DISTRIBUTION OF DECOMPENSATIO CORDIS IN 2023

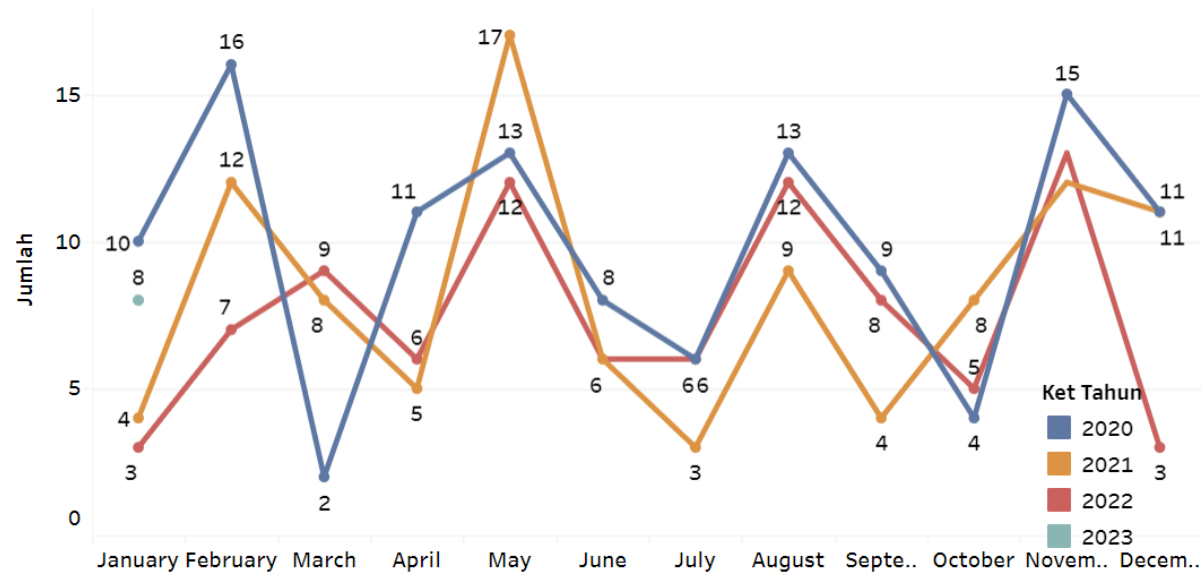


THE NUMBER OF CASES OF DECOMPENSATIO CORDIS BASED ON AGE 2023

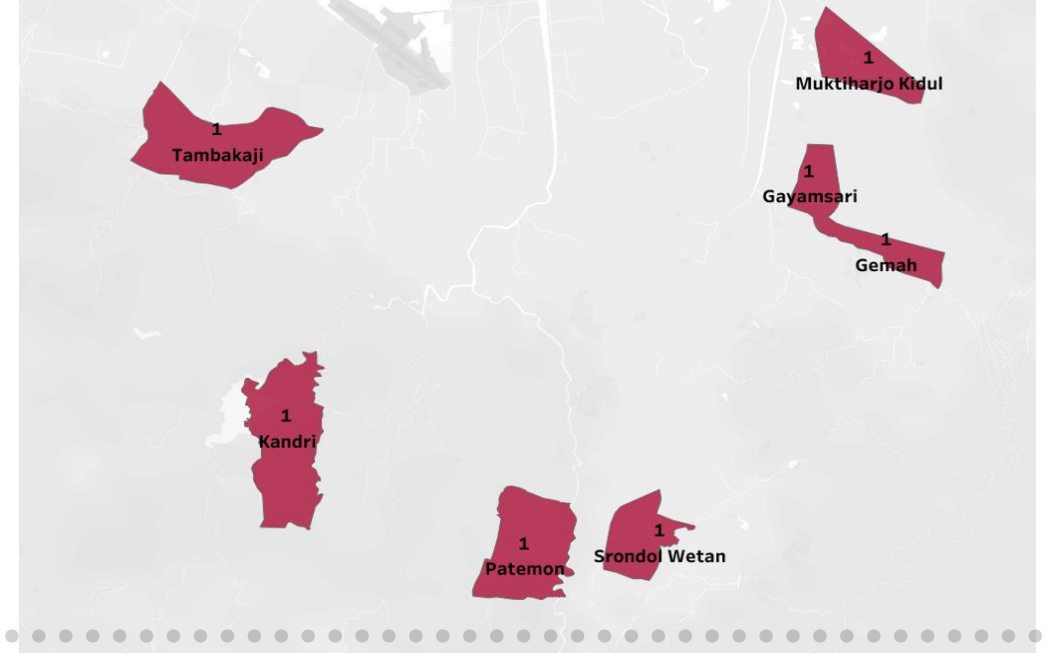


Acute Myocardial Infarction

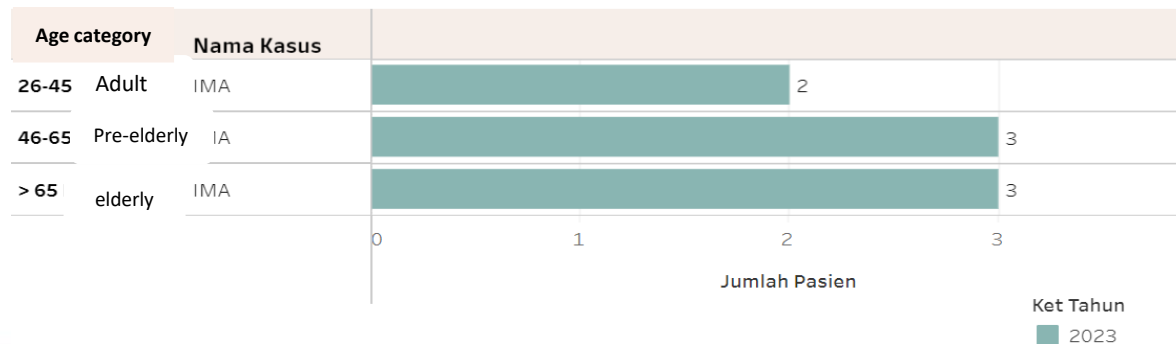
TREND OF AMI CASES FROM 2020 TO 2023



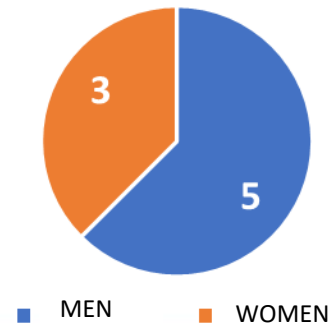
THE DISTRIBUTION OF AMI IN 2023



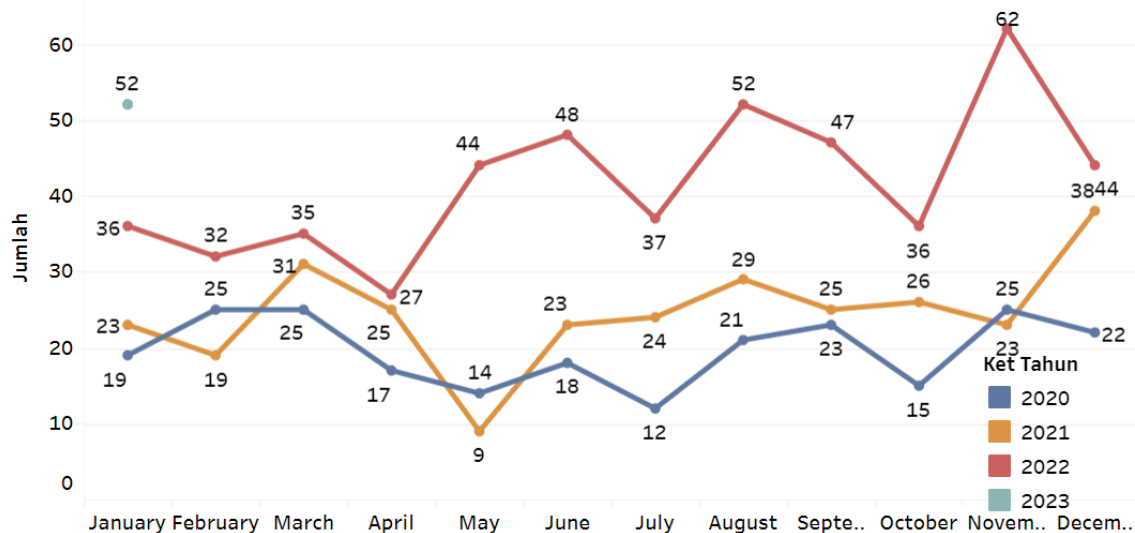
AMI CASES BASED ON AGE IN 2023



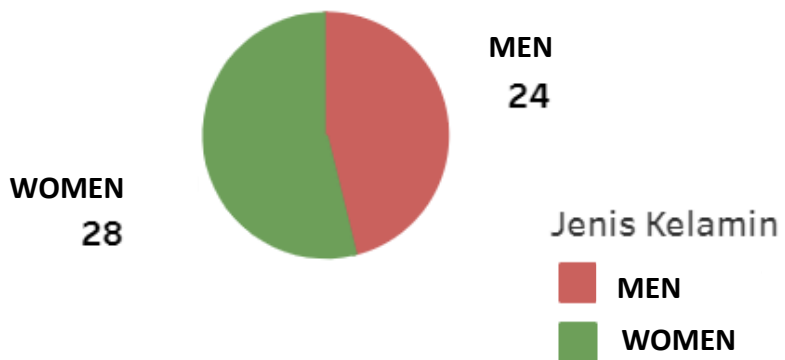
AMI CASES BASED ON GENDER IN 2023



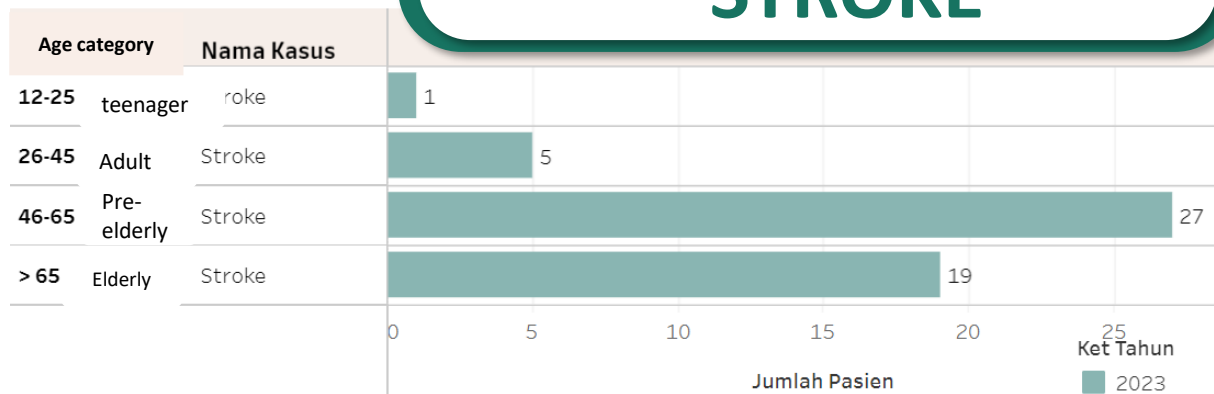
TREND OF STROKE CASES FROM 2020 TO 2023



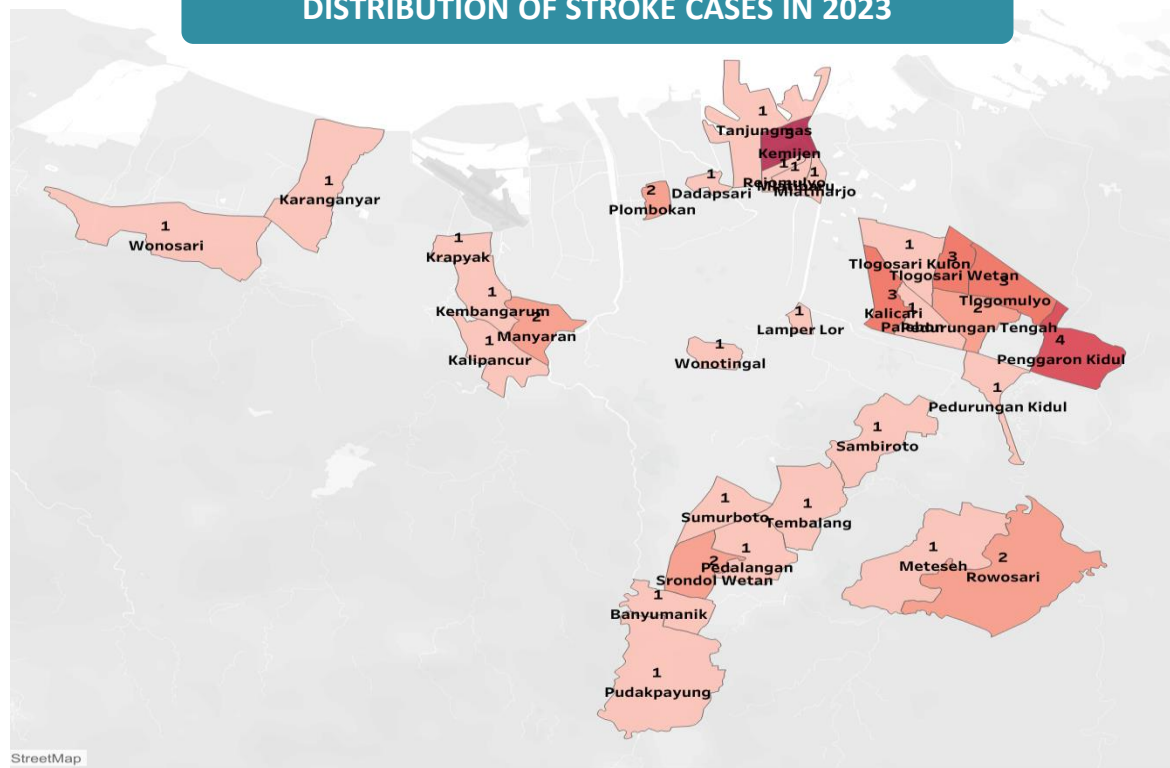
STROKE CASES BY GENDER IN 2023



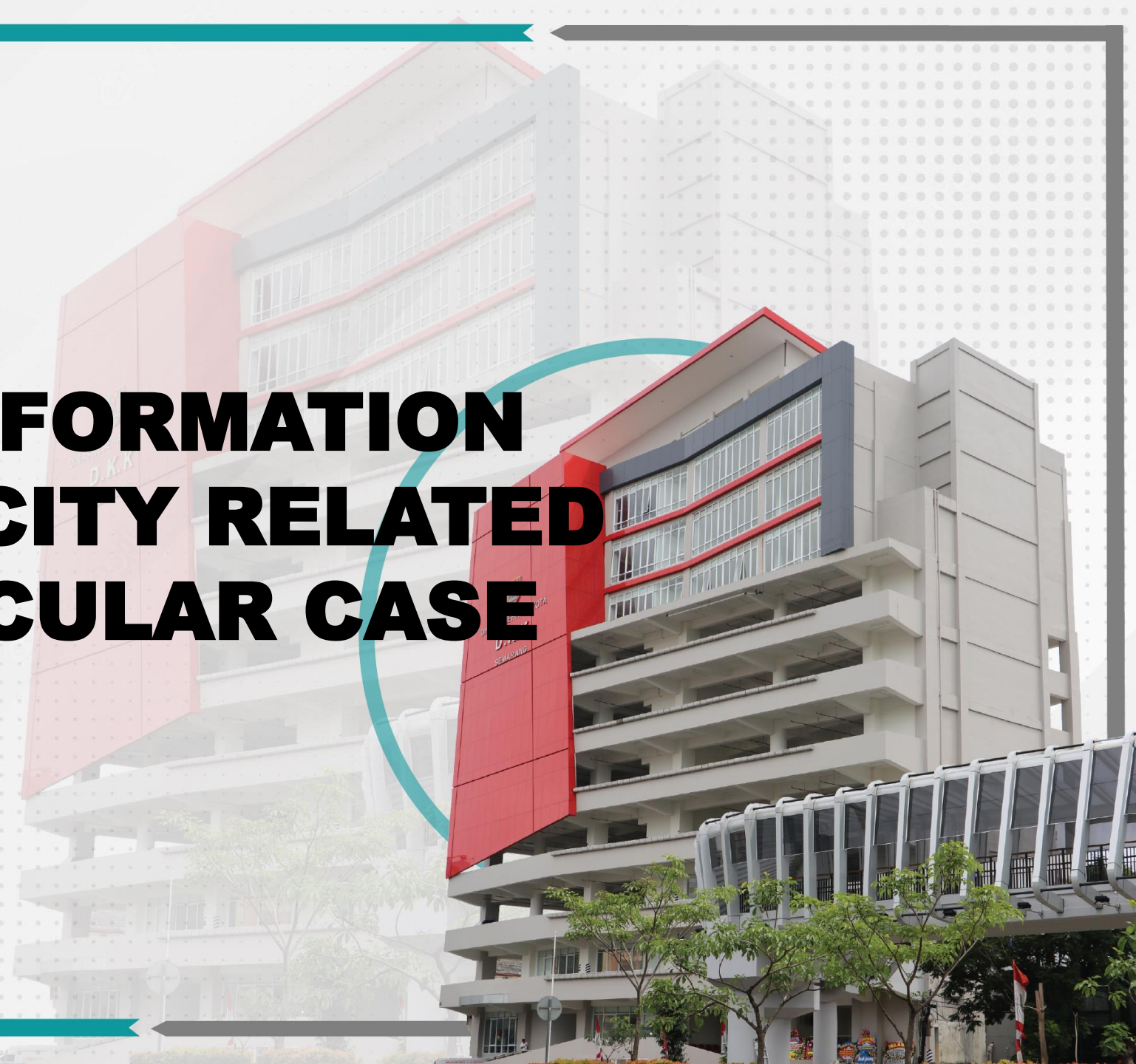
STROKE



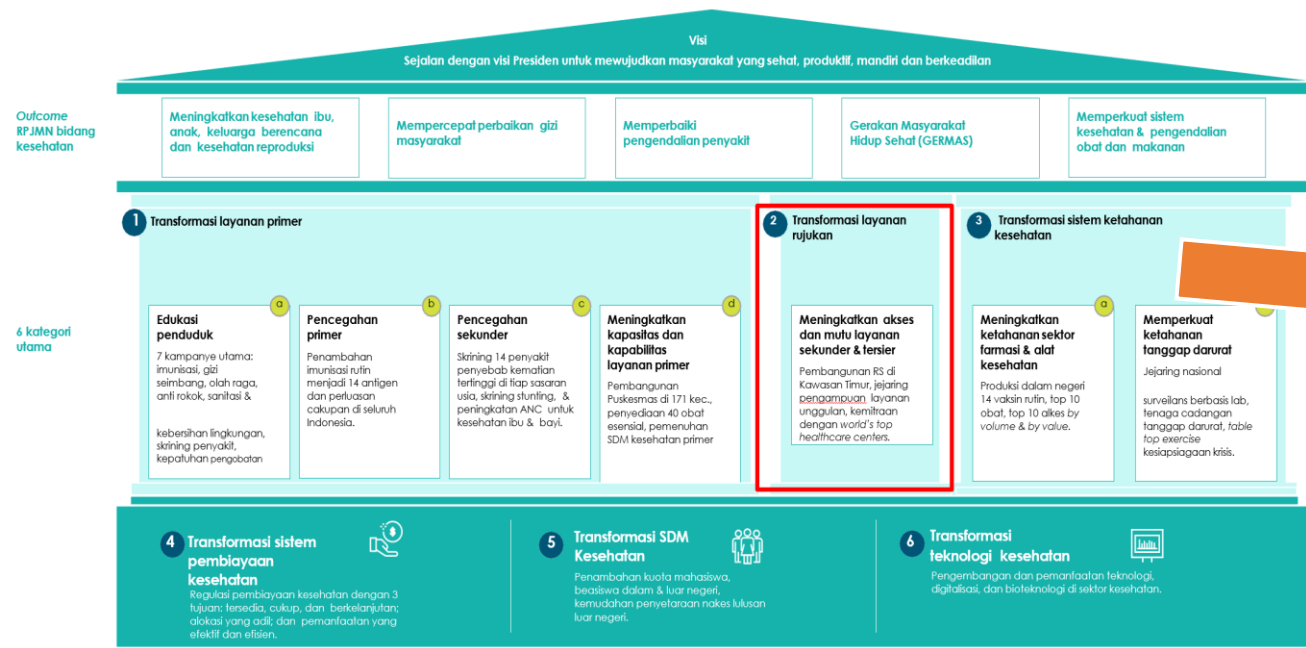
DISTRIBUTION OF STROKE CASES IN 2023



HEALTH TRANSFORMATION IN SEMARANG CITY RELATED TO CARDIOVASCULAR CASE SERVICES



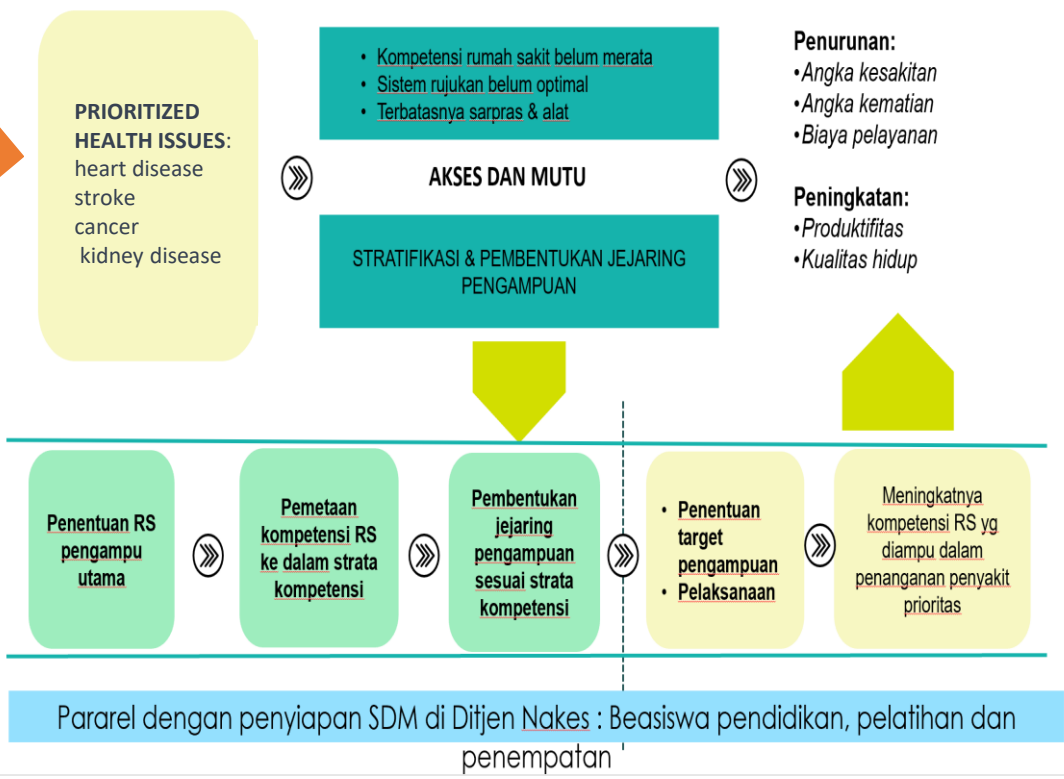
Kemendes berkomitmen untuk melakukan transformasi sistem kesehatan
6 pilar transformasi penopang kesehatan Indonesia



Curative

STRATIFICATION AND NETWORK OF PRIORITY SERVICE PROVISION

identification of hospitals in providing services for 9 priority diseases and establishment of support networks



Vertical Hospital as a national priority service provider hospital



National Brain Center Hospital (RS PON) as the primary stroke service provider

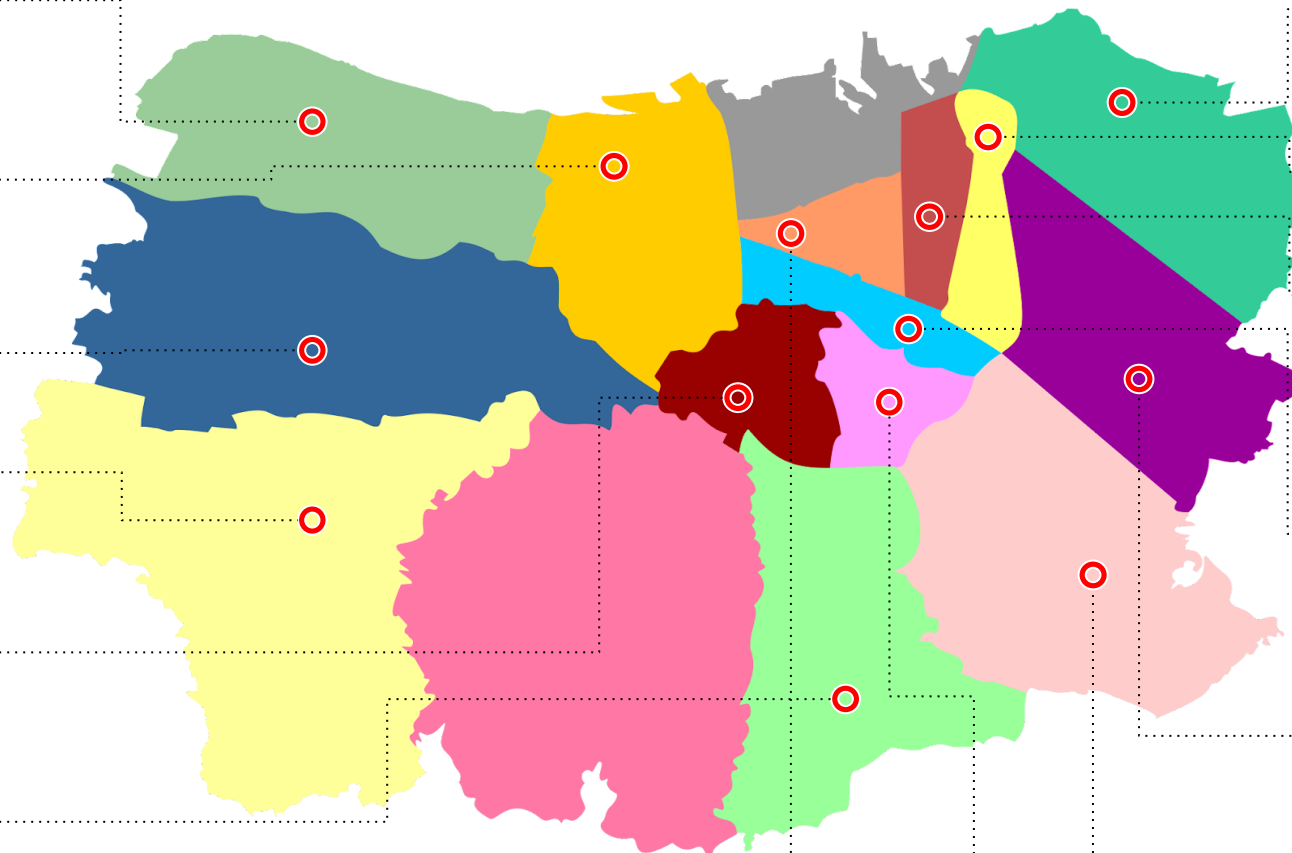


RSJPD Harapan Kita as the primary cardiac service provider



MAP OF FLAGSHIP SERVICES OF HOSPITALS IN SEMARANG CITY

LAST UPDATE : MINGGU - 52 TAHUN 2022



TUGU

- CARDIOVASCULAR(INTERMEDIATE)
- CANCER (INTERMEDIATE)
- Maternal & Child Health Services(INTERMEDIATE)
- PONEK & TBC (INTERMEDIATE)

SEMARANG BARAT

- CARDIOVASCULAR(INTERMEDIATE)
- CANCER (INTERMEDIATE)
- Maternal & Child Health Services(COMPLETE)

NGALIYAN

- PONEK (INTERMEDIATE)
- Maternal & Child Health Services(INTERMEDIATE)

MIJEN

TIDAK ADA

GAJAHMUNGKUR

- PONEK (INTERMEDIATE)
- Maternal & Child Health Services(INTERMEDIATE)

BANYUMANIK

- PONEK (INTERMEDIATE)

SEMARANG TENGAH

- CARDIOVASCULAR(PRIMARY)
- CANCER (INTERMEDIATE)
- Maternal & Child Health Services(COMPLETE)
- PONEK (INTERMEDIATE)
- TBC (INTERMEDIATE)
- STROKE (INTERMEDIATE)

CANDISARI

- CARDIOVASCULAR(INTERMEDIATE)
- DM (INTERMEDIATE)
- Maternal & Child Health Services(COMPLETE)
- PONEK (PRIMARY)

GENUK

- CARDIOVASCULAR(PRIMARY)
- PONEK (INTERMEDIATE)
- Maternal & Child Health Services(INTERMEDIATE)

GAYAMSARI

- PONEK (INTERMEDIATE)

SEMARANG TIMUR

- Maternal & Child Health Services(INTERMEDIATE)

SEMARANG SELATAN

- CARDIOVASCULAR(COMPLETE)
- DM (PRIMARY)
- Maternal & Child Health Services(COMPLETE)
- PONEK (COMPLETE)
- CANCER (PRIMARY)
- STROKE (PRIMARY)
- URO NEFROLOGI (PRIMARY)
- TBC (COMPLETE)

PEDURUNGAN

TIDAK ADA

TEMBALANG

- CARDIOVASCULAR(COMPLETE)
- DM (DASAR)
- Maternal & Child Health Services(COMPLETE)
- PONEK (INTERMEDIATE)
- CANCER (INTERMEDIATE)
- STROKE (INTERMEDIATE)
- URO NEFROLOGI (INTERMEDIATE)
- TBC (INTERMEDIATE)



CARDIOVASCULER SERVICES

COMPLETE

PRIMARY

1. RSUP Dr. KARIADI SEMARANG
2. RS TELOGOREJO
3. RSI SULTAN AGUNG

INTERMEDIATE

1. RSUD TUGUREJO PROV. JAWA TENGAH
2. RSUD KRMT WONGSONEGORO
3. RS ST. ELISABETH SEMARANG
4. RSK BEDAH COLUMBIA ASIA

BASIC

1. RS PANTI WILASA "DR. CIPTO"
2. RS BHAKTI WIRA TAMTAMA SEMARANG
3. RS BHAYANGKARA SEMARANG
4. RS PRIMAYA
5. RS BANYUMANIK 2
6. RS ROEMANI MUHAMMADIYAH
7. RS NASIONAL DIPONEGORO

NON CATEGORIZED

1. RSU WILLIAM BOOTH SEMARANG
2. RS BANYUMANIK
3. RS HERMINA PANDANARAN
4. RS PERMATA MEDIKA
5. RS HERMINA BANYUMANIK
6. RS BHAYANGKARA AKPOL

STROKE SERVICES

COMPLETE

PRIMARY

1. RSUP Dr. KARIADI SEMARANG

INTERMEDIATE

1. RSUD K.R.M.T WONGSONEGORO

BASIC

1. RSUD TUGUREJO PROV. JAWA TENGAH
2. RS TELOGOREJO SEMARANG
3. RS. ST. ELISABETH SEMARANG
4. RS PRIMAYA
5. RSK BEDAH COLUMBIA ASIA SEMARANG

NON CATEGORIZED

1. RS NASIONAL DIPONEGORO
2. RS HERMINA PANDANARAN
3. RSI SULTAN AGUNG
4. RS PANTI WILASA "DR. CIPTO"
5. RS. BHAKTI WIRA TAMTAMA
6. RS BHAYANGKARA SEMARANG
7. RSU WILLIAM BOOTH SEMARANG
8. RS BANYUMANIK
9. RS BANYUMANIK 2
10. RS ROEMANI MUHAMMADIYAH
11. RS PERMATA MEDIKA
12. RS HERMINA BANYUMANIK
13. RS BHAYANGKARA AKPOL

TARGET FOR IMPROVING HOSPITAL STRATIFICATION IN 2023

NO	HOSPITAL	CLASS	CardiovasCuler	Stroke
1	RS Umum Pusat Dr. Kariadi	A	PRIMARY	PRIMARY
2	RS Umum Daerah Tugurejo Semarang	B	INTERMEDIATE	BASIC
3	RS Umum Daerah KRMT Wongsonegoro	B	INTERMEDIATE	INTERMEDIATE
4	RS Umum St. Elisabeth Semarang	B	INTERMEDIATE	BASIC
5	RS Umum Telogorejo Semarang	B	PRIMARY	BASIC
6	RS Umum Sultan Agung Semarang	B	PRIMARY	NON CATEGORIZED

The hospital has submitted a service description for a cath lab:

1. RSUP DR. KARIADI SEMARANG
2. RSUD KRMT WONGSONEGORO
3. RSI SULTAN AGUNG
4. RS TELOGOREJO
5. RS ELISABETH
6. RSND

CARDIAC CATHETERIZATION OF THE HOSPITAL (CATH LAB)

LAWANG SEWU

promotive preventive



Dinas Kesehatan
Kota Semarang



LAWANG SEWU
Layanan Warga Semarang
Sehat Setiap Waktu

AKTIVITAS FISIK

EDUKASI PHBS

KESEHATAN LINGKUNGA

PANGAN SEHAT DAN BERGIZI

DETEKSI DINI

VALAS
Virtual Activity Link
Dengan SIPGAR

PRAMBANAN
Pergi Pasar dan Berangkat Kantor
Biasakan Jalan

UCOK BABA
Uji & Skiring Bahan Air
dan Bahan Makanan

POLKE
PIRT - BPOM -
LAIK SEHAT - HYGIENE

SI KEMPLING
Sistem Informasi
Kesehatan Masyarakat
dan Lingkungan

LANGIT SEMARANG
Langkah Aktif Terpadu
Konsumsi Makanan Bergizi
Seimbang Dengan Urban Farming

UNGERAN
Ubah Pekarangan Kosong
Dengan Urban Farming

RAJA SALMAN
Bersama-sama menjaga
Kota Semarang Makin Sehat

DEMAK
Daftar Request Makanan
dari Start-Up

BAIUSSALAM
Bangkitkan Imun dan Taqwa
Untuk Semarang Semakin
Afiat Lincah Anti Dimensia

PERKASA
Pemeriksaan Kesehatan
Berkala Cegah Obesitas

PANGERAN CHARLES
Paket Kesehatan Pemeriksaan
Covid19, hepatitis, IVA Test,
Diabetes, dan HIV



PROMOTIVE AND PREVENTIVE EFFORTS TO REDUCE MORBIDITY RATES



Policies and regulations: Presidential instruction No 1/2017 about the healthy living community movement

THREAT OF NON-COMMUNICABLE DISEASES



Cardiovascular diseases

Engaging in physical activity




- Physical activity for at least 30 minutes per day or 3-5 times a week
- Stretching or exercising at work at least once a week
- Utilizing public transportation, walking, or cycling to get to work
- Participating in sports in the community


Benefits of physical activity

1. Lowering blood pressure
2. Increasing HDL cholesterol
3. Lowering LDL cholesterol and triglycerides
4. Reducing total body fat
5. Reducing insulin requirements
6. Improving glucose tolerance
7. Improving performance
8. Reducing morbidity and mortality rates





Diabetes



Chronic respiratory diseases

VIRTUAL ACTIVITY LINK SEMARANG SEHAT DENGAN APLIKASI

The implementation of GERMAS (Healthy Lifestyle Movement) in the Health Office is a program that is carried out by all employees of the Health Office and its service units. By utilizing a health measurement application on their mobile phones to measure their steps and physical activity time

VALAS Reporting format

Gform for upload the proof

➔ <https://bit.ly/FORMAKTIVITASFISIK>

Spreadsheet rekapan RAPOT VALAS

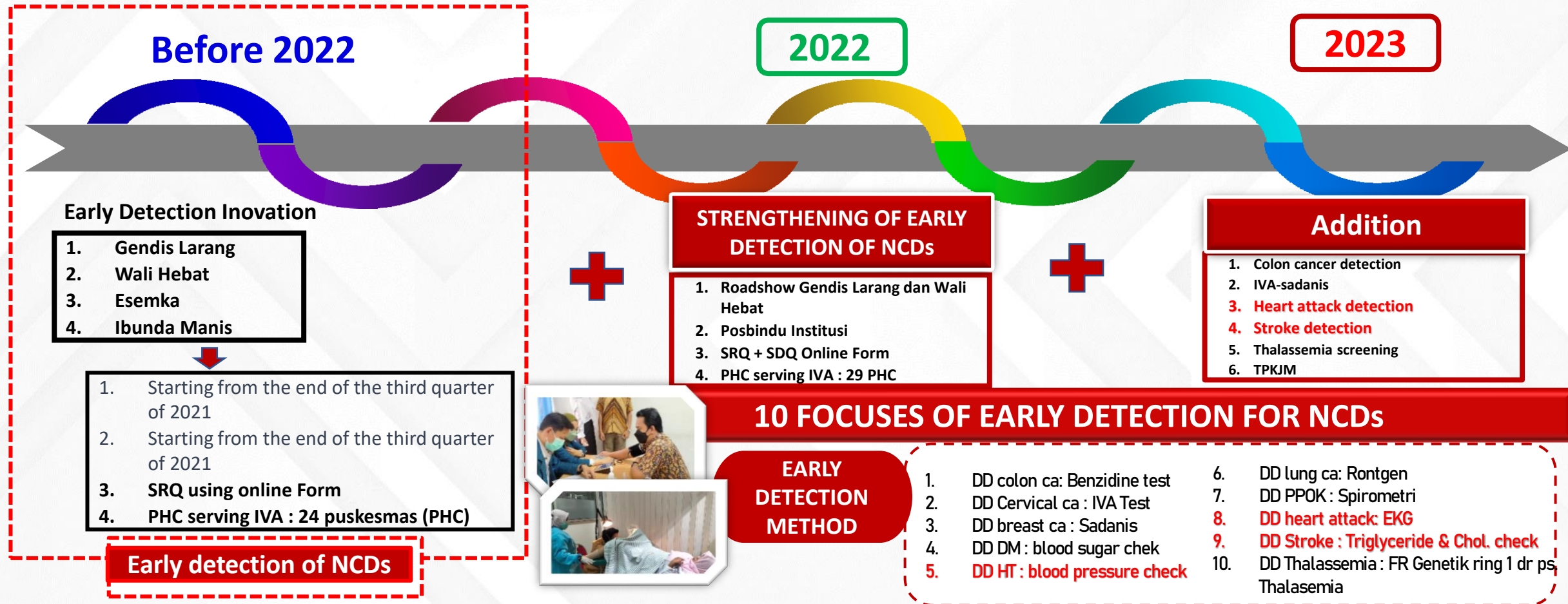
➔ <https://bit.ly/RAPOTVALAS>

Deficiency of VALAS Innovation Reporting

The Valas Reporting System in the form of sending personal data and screenshots to Google Forms and data recapitulation is still manual. Therefore, human error is still very possible in the Valas reporting recapitulation.

NO	NAMA	TAHUN	JENIS	USIA	BB (kg)	TBG (cm)	DESEMBER												JUMLAH LANGKAH	WAKTU																	
							1	2	3	4	5	6	7	8	9	10	11	12			13	14	15	16	17	18	19	20	21	22	23	24	25	26	27	28	29
1	DR. H. SUDHARNO, Sp.PD, Sp.PD(K), Sp.PD(SA)	1962	P	60	70	170	1	2	3	4	5	6	7	8	9	10	11	12	13	14	15	16	17	18	19	20	21	22	23	24	25	26	27	28	29	30	31

TRANSFORMATION OF EARLY DETECTION SERVICES FOR NCDs IN SEMARANG CITY



Strengthening of the network of management of NCDs

PHC	: 37	Clinic / Lab	: 29
Posbindu	: 289	PMB	: 112
Hospital	: 28		

Early Detection facilities & infrastructure at PCH

- Posbindu kit	- Benzidine test	- IVA kit
- Blood Glucose test strip	- EKG paper	- Reagen TG dan kholes

Recording & Reporting

ASIK	SIPTM JATENG	PAK EDI PERKASA/SIMPUS
------	--------------	------------------------



DINKES

Dinas Kesehatan Kota Semarang

TERIMA KASIH

SALAM SEMARANG SEHAT!



MASKER



NGADOH



WIJIK